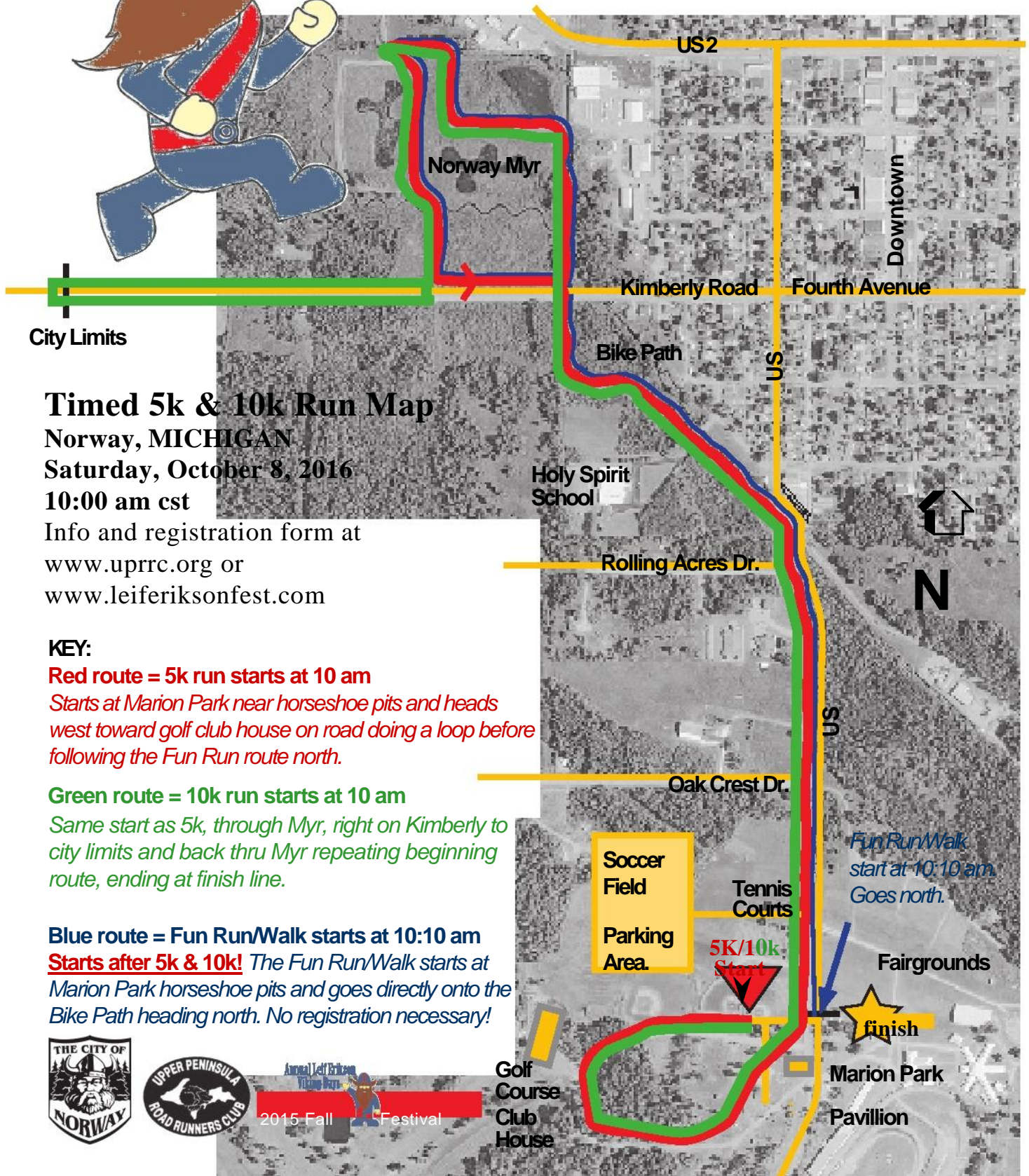


LEIF'S RUN



City Limits

Timed 5k & 10k Run Map

Norway, MICHIGAN

Saturday, October 8, 2016

10:00 am cst

Info and registration form at
www.uprrc.org or
www.leiferiksonfest.com

KEY:

Red route = 5k run starts at 10 am

Starts at Marion Park near horseshoe pits and heads west toward golf club house on road doing a loop before following the Fun Run route north.

Green route = 10k run starts at 10 am

Same start as 5k, through Myr, right on Kimberly to city limits and back thru Myr repeating beginning route, ending at finish line.

Blue route = Fun Run/Walk starts at 10:10 am

Starts after 5k & 10k! *The Fun Run/Walk starts at Marion Park horseshoe pits and goes directly onto the Bike Path heading north. No registration necessary!*



October 7-9 is Norway's Annual Leif Erikson Fall Festival. Go to leiferiksonfest.com for more information.